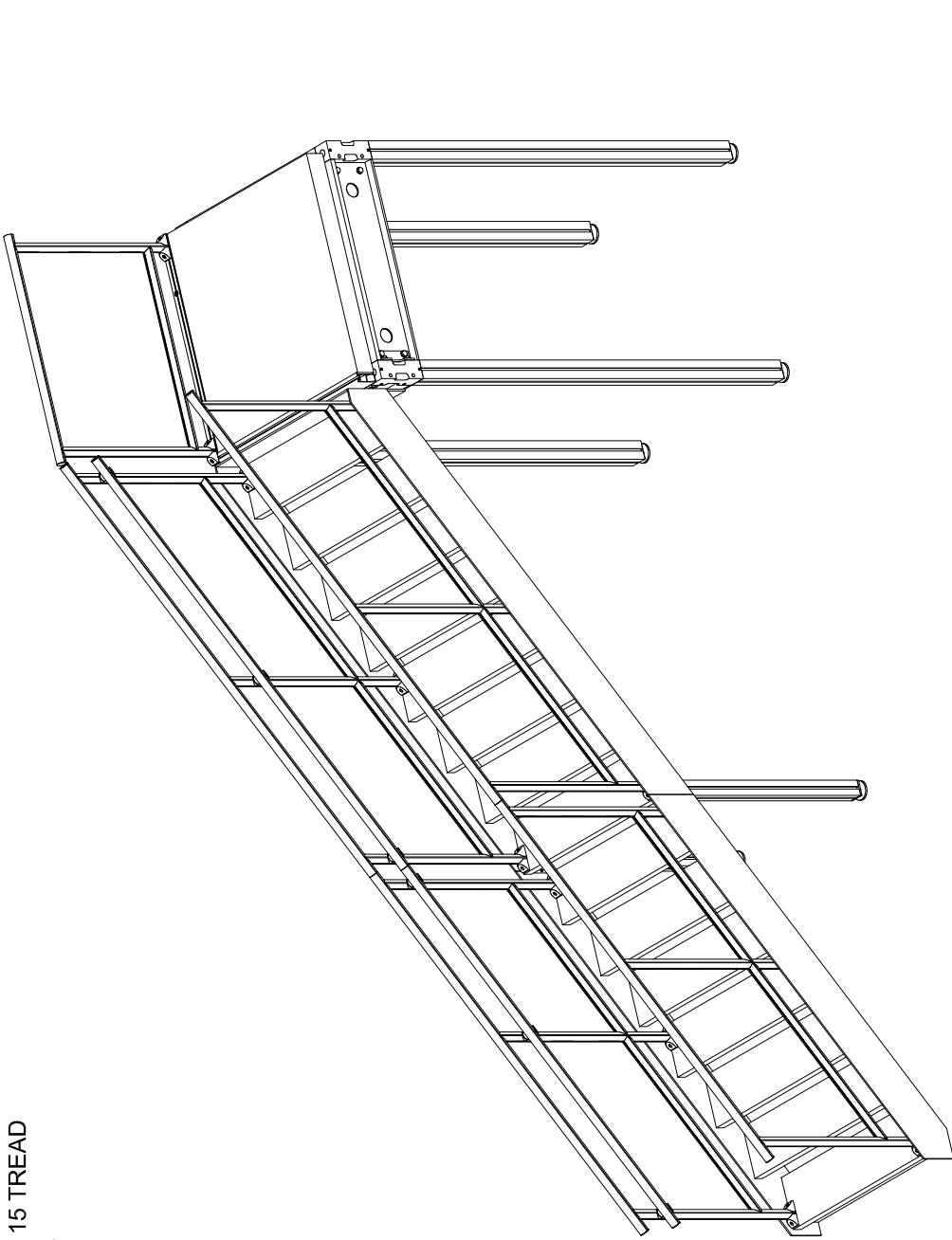


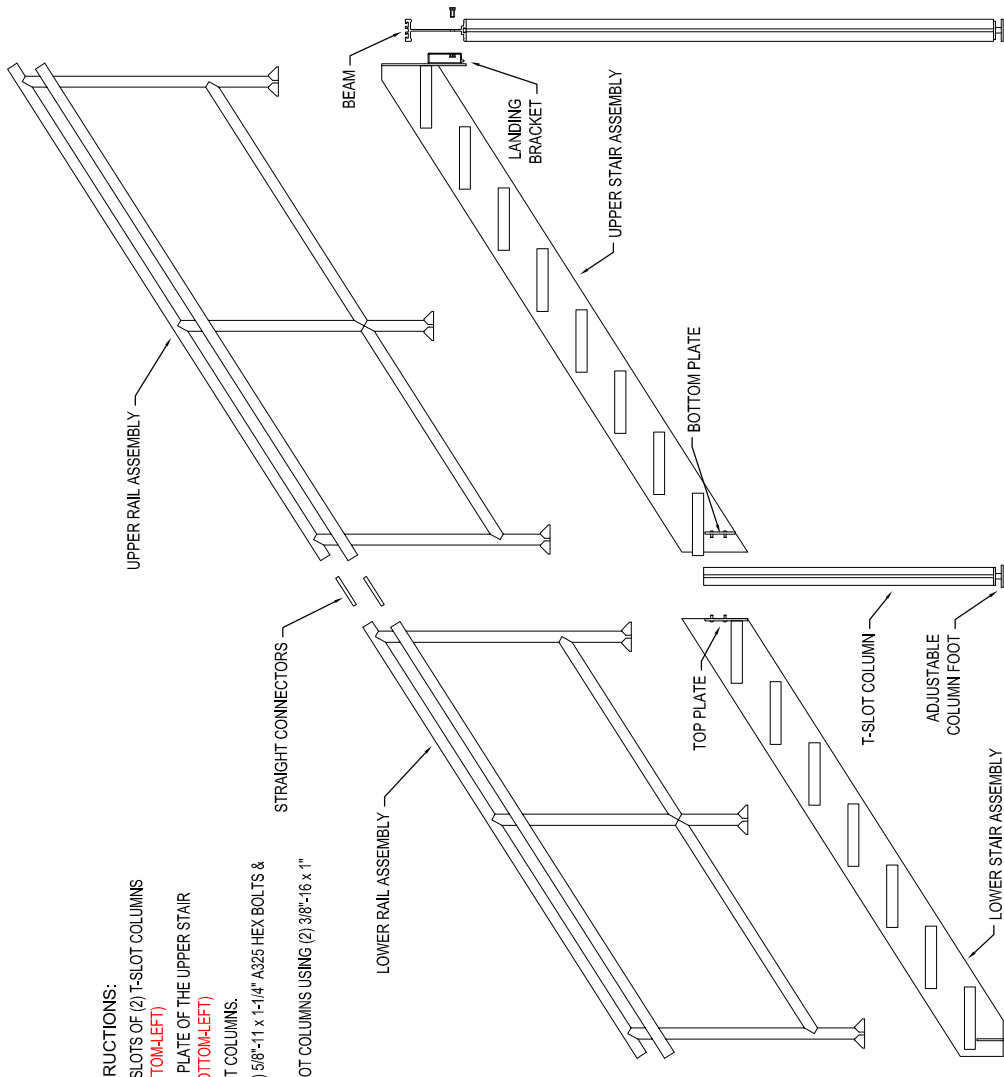
**STANDARD 15 TREAD  
STAIRCASE**



**STAIRCASE ASSEMBLY**

- STAIR ASSEMBLY INSTRUCTIONS:**
1. SECURE (4) 3/8"-16 x 1/2" SET SCREWS. (SEE BOTTOM-LEFT)
  2. FASTEN EACH T-SLOT COLUMN TO THE BOTTOM PLATE OF THE UPPER STAIR ASSEMBLY USING (2) 3/8"-16 x 1" BHCS. (SEE BOTTOM-LEFT)
  3. INSERT COLUMN FEET INTO BOTTOM OF T-SLOT COLUMNS.
  4. FASTEN LANDING BRACKET TO BEAM USING (2) 5/8"-11 x 1-1/4" A325 HEX BOLTS & (2) 5/8" A325 WASHER. (SEE BOTTOM-RIGHT)
  5. FASTEN LOWER STAIR ASSEMBLY TO THE T-SLOT COLUMNS USING (2) 3/8"-16 x 1" BHCS. (SEE BOTTOM-LEFT)
  6. ADJUST COLUMN FEET AS NEEDED.

- STAIR RAIL ASSEMBLY INSTRUCTIONS:**
7. COMBINE UPPER & LOWER RAIL ASSEMBLIES WITH STRAIGHT CONNECTORS & SET SCREWS. (SEE BOTTOM-LEFT)
  8. ATTACH COMBINED RAIL ASSEMBLIES TO STAIRS WITH Ø3/8"-16 x 2-1/4" SHCS.



|  |                            |                    |            |
|--|----------------------------|--------------------|------------|
| <p><b>HIGHMARK</b><br/>TECHNOLOGIES<br/>PERFORMANCE PARTS SYSTEMS<br/>8333 Clinton Park Drive<br/>Fort Wayne, IN 46825<br/>Phone: 260-483-0012<br/>Fax: 260-482-4877</p> | Client:                    | Highmark Tech.     |            |
|  | Description:               | Setup Instructions |            |
|  | Date:                      | 12/09/2008         | E / 4      |
|  | © 2008 All Rights Reserved | Drawn By:          | D Overmyer |

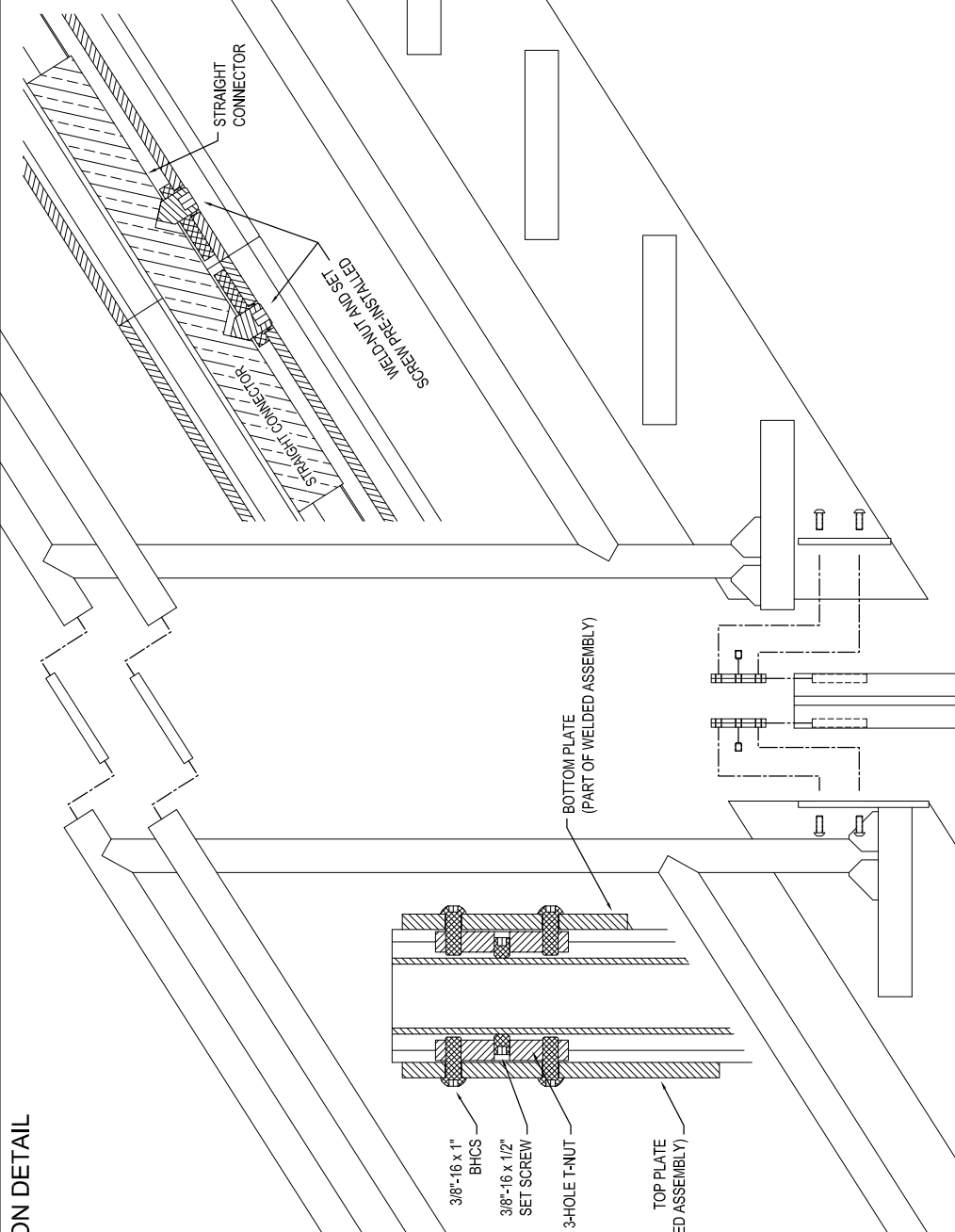
| REVISIONS | DATE |
|-----------|------|
| A         |      |
| B         |      |
| C         |      |
| D         |      |

Misc. Components:

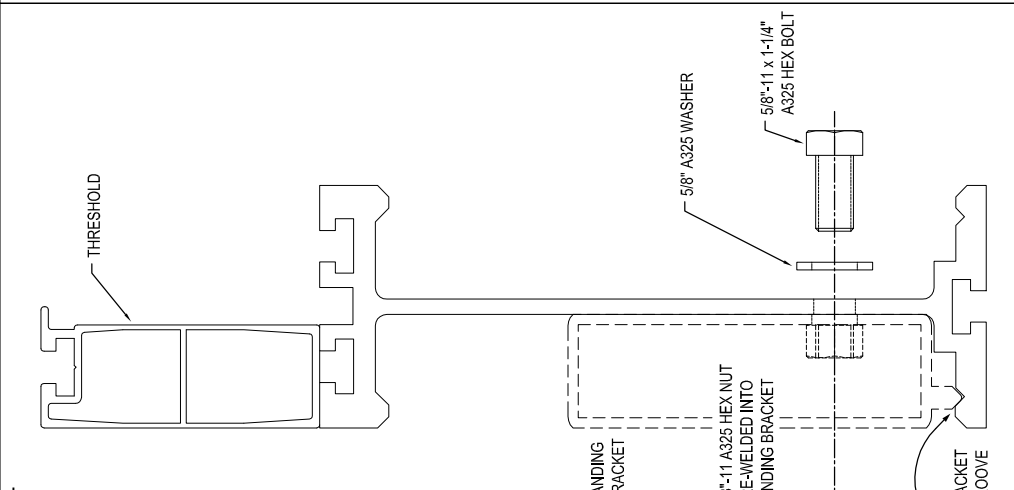
|                          |                          |                          |                          |                          |                          |
|--------------------------|--------------------------|--------------------------|--------------------------|--------------------------|--------------------------|
| <input type="checkbox"/> | <input type="checkbox"/> | <input type="checkbox"/> | <input type="checkbox"/> | <input type="checkbox"/> | <input type="checkbox"/> |
|--------------------------|--------------------------|--------------------------|--------------------------|--------------------------|--------------------------|

Notes:

**CONNECTION DETAIL**



**LANDING BRACKET**



**HANDRAIL ADAPTER**

